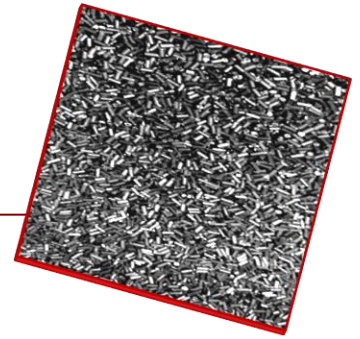


# Firestone

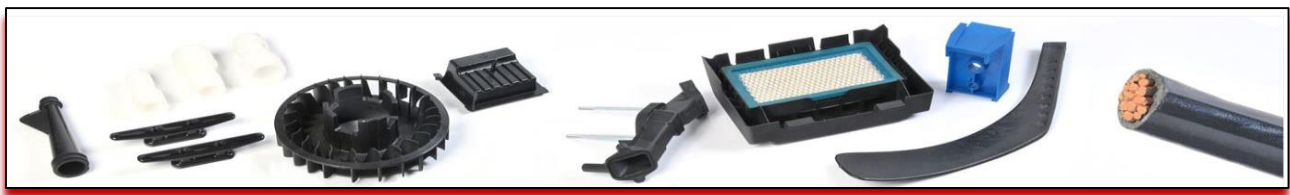
**CG415 – 203 Nylon 6 Resin – Black 15% Glass Filled Chips**



## TYPICAL PROPERTIES

Application		Injection Moulding	
Colour		Black	
Heat Stabilized		No	
Chopped Fiberglass	%	15	
Fiber Dimension	Length - mm	4	
	Diameter - micron	14	
Modified		No	
Moisture	% Max	0.1	
Chip Size	mm	2.55 – 3.99	
Mould Shrinkage	%	0.35	ASTM D955
Specific Gravity		1.28	ASTM D792
Tensile Strength	MPa	114	ASTM D638
	PSI	16,530	
Elongation	%	60	ASTM D638
Flex Modulus	MPa	5,315	ASTM D790
	PSI	770,730	
Flex Strength	MPa	168	ASTM D790
	PSI	24,395	
Notched Izod Impact	Ft.lb/in	1	ASTM D256
Deflection Temp.	0.45MPa / 66 PSI	-	ASTM D648
	1.82 MPa / 264 PSI	196 DegC	
Melt Temperature		220 DegC	

*NON WARRANTY. The information presented in this publication is based upon the research and experience of Firestone and is to the best of its knowledge accurate; however, no guarantee of its accuracy is made. Since Firestone has no control over the conditions under which its products may be employed and since information as to the physiological and other properties of its products is incomplete, Firestone cannot guarantee the results obtained and assumes no liability whatsoever for possible damage or injury whether or not caused by following the suggestions in this brochure. Firestone will not be liable for resulting or consequential damage. Firestone warrants that none of its commercial products infringes the claims of any Canadian or United States patent but no license is granted nor recommendation made hereby to practice any invention covered by any patent owned by Firestone or by others.*



Firestone® Textiles Company

1200 Dundas Street East, Woodstock, ON N4S 7Y9, Canada, Tel: +1 519-421-5648, Fax: +1 519-537-6235